

FAQ - Installing new firmware and/or options on Model 831 and SoundTrack LXT®

Firmware Versions: V1.6 (831) or V1.522 (LxT) and later

Describes how to upload the latest firmware and/or new options to Model 831 and SoundTrack LXT®

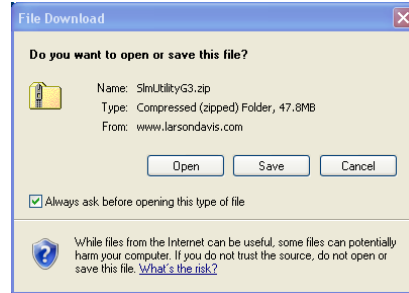


Please follow the instructions below to upgrade firmware and/or options on Model 831 or SoundTrack LXT®.

Upgrading to the latest version of SLM Utility-G3

- Go to http://www.larsondavis.com/Support/Model831_Support.htm for the Model 831 or http://www.larsondavis.com/Support/SoundTrackLxT_Support.htm for the SoundTrack LXT and download the most recent version of SLM Utility-G3.

- Save the zip file on your PC
Note: If the path to the file is longer than 128 characters the Windows operating system may generate an error. You will have to move the zip file to a location with a shorter path name.



- Disconnect any Model 831 or SoundTrack LxT that is connected to the PC.
- After the file is saved, open the zip file and run the file setup.exe.
- Follow the wizard instructions to install SLM Utility-G3 on your PC

WARNING: Do not close the folder containing the zip file until after SLM Utility-G3 has finished installing.

- Upon completion of the install, you will see the SLM Utility-G3 shortcut on your desktop



Connecting the meter to the computer

- Connect the USB cable from the meter to the computer and turn the meter on
- When using Windows XP, the Found New Hardware Wizard will appear. If prompted, do not search Windows Update for the driver. Select Install the software automatically.

When using Windows 7, the driver will install automatically.

- Click Next, then Finish.



716-926-8243
www.larsondavis.com



FAQ - Installing new firmware and/or options on Model 831 and SoundTrack LXT®

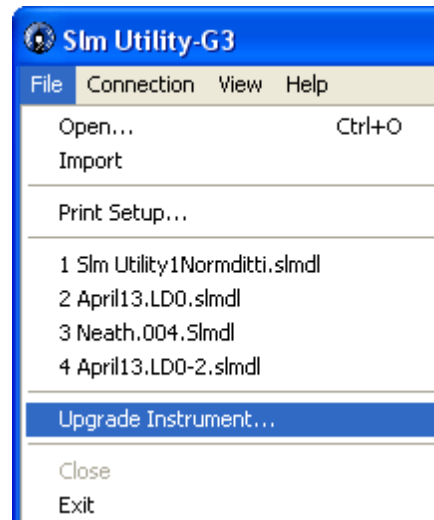
Firmware Versions: V1.6 (831) or V1.522 (LxT) and later

Describes how to upload the latest firmware and/or new options to Model 831 and SoundTrack LXT®

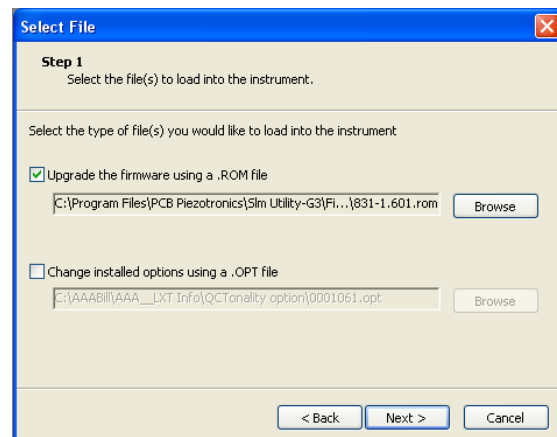


Installing firmware in Model 831 and SoundTrack LXT® using SLM Utility-G3

- **Warning:** The upgrade process will cause all data and setups stored within the sound level meter to be lost. Using SLM Utility-G3, save any data or setups you have in the meter before upgrading.
- **Warning:** Loss of power during firmware upgrade may leave the instrument inoperable. As a consequence, leave the sound level meter connected to the PC and don't remove the cable until loading new firmware has completely finished.
- Run SLM Utility-G3 software
- click **File > Upgrade Instrument.**



- Follow the on screen instructions until you reach the screen where the firmware file is selected and ensure that “**Upgrade the firmware using a .ROM file**” is selected.
- Click the **Browse** button and select the firmware file appropriate for your instrument (either the 831 or LxT file); click **Open**.
- Follow the wizard instructions to complete the firmware upgrade process.



 716-926-8243
 www.larsondavis.com

 **LARSON DAVIS**
A PCB PIEZOTRONICS DIV.

README_831-LXT_Upgrade_Instructions_8-11.pdf

FAQ - Installing new firmware and/or options on Model 831 and SoundTrack LXT®

Firmware Versions: V1.6 (831) or V1.522 (LxT) and later

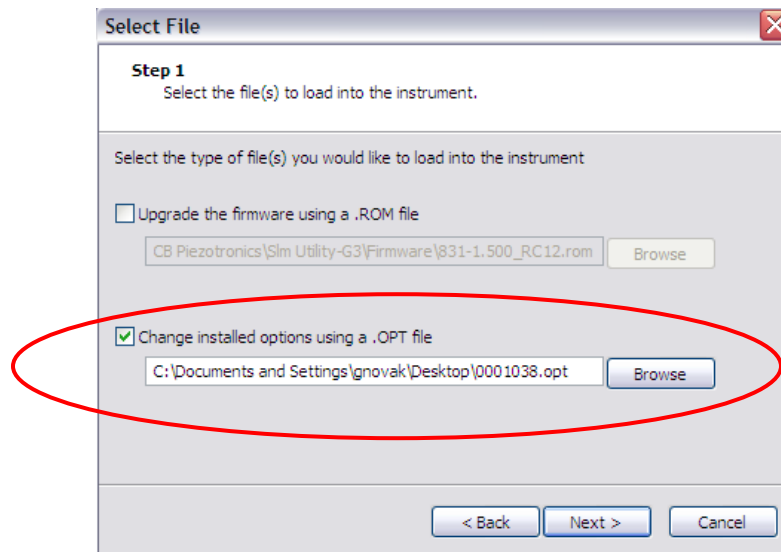
Describes how to upload the latest firmware and/or new options to Model 831 and SoundTrack LXT®



Installing options in Model 831 and SoundTrack LXT® using SLM Utility-G3

- Follow the instructions for Installing firmware, select “**Change Installed Options using a .OPT File**” checkbox and browse to the location where you have stored the .OPT file.
- Follow the instructions as prompted to upgrade the options file.

NOTE – An options file is linked to the serial number of an instrument and is typically emailed to you after order placement, Make sure the meters serial number and .OPT file serial number match before continuing.



FAQ - Installing new firmware and/or options on Model 831 and SoundTrack LXT®

Firmware Versions: V1.6 (831) or V1.522 (LxT) and later

Describes how to upload the latest firmware and/or new options to Model 831 and SoundTrack LXT®



Troubleshooting

- SLM Utility-G3 cannot find my sound level meter because the sound level meter will not fully boot. If your sound level meter will not fully boot try the following step
 1. While instrument is booting and the banner icon is in the middle of the screen, press and hold **Stop, Reset** and **Enter** simultaneously for 5 seconds to reformat the internal memory.
 - **WARNING** – this will cause any data stored in the sound level meter to be lost
 2. While instrument is booting and the banner icon is in the middle of the screen, press and hold **Tools** and **Enter** simultaneously for 5 seconds for the instrument to stop booting for 2 minutes. During this 2 minute period, you can use SLM Utility-G3 to load new firmware following the steps outlined in **Installing firmware in Model 831 and SoundTrack LxT® using SLM Utility-G3**



716-926-8243

www.larsondavis.com

