

# FAQ - Installing new firmware and/or options on Model 831 and SoundTrack LXT®

## Firmware Version: V1.5 and later

Describes how to upload the latest firmware and/or new options to Model 831 and SoundTrack LXT®



Please follow the instructions below to upgrade firmware and/or options on Model 831 and SoundTrack LXT®.

### Upgrade to the latest version of SLM Utility-G3

- Go to Support, Sound Level Meters on the [www.larsondavis.com](http://www.larsondavis.com) website to ensure you are using the most recent version of SLM Utility-G3.



- Select Model 831 or Soundtrack LxT

#### Sound Level Meters

Model 831

Soundtrack LxT

Model 824

Model 820

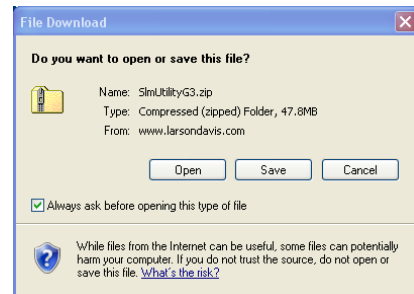
Model 812

Model 720

- In the Software section select SLM Utility

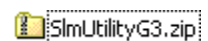


- Select Save to save the zip file in a folder on your PC



- At this point, make sure that all USB cables to the 831 or LxT have been removed from your PC

- After the file is saved in your folder, go there and double-click on the zip icon



716-926-8243  
[www.larsondavis.com](http://www.larsondavis.com)




# FAQ - Installing new firmware and/or options on Model 831 and SoundTrack LXT®

## Firmware Version: V1.5 and later

Describes how to upload the latest firmware and/or new options to Model 831 and SoundTrack LXT®

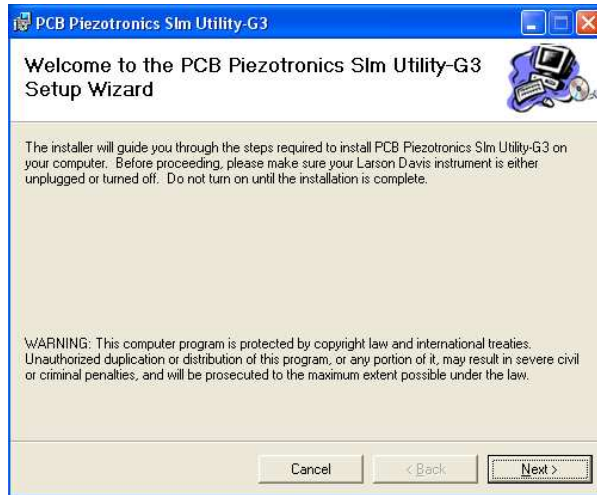


- Inside this folder, you will find the installation executable icon  setup.exe
- Begin installation of the G3 Utility Software by double-clicking on this icon
- You will be requested to accept the installation of the Redistributable Library of Visual C++

- Select Install



- Select Next



# FAQ - Installing new firmware and/or options on Model 831 and SoundTrack LXT®

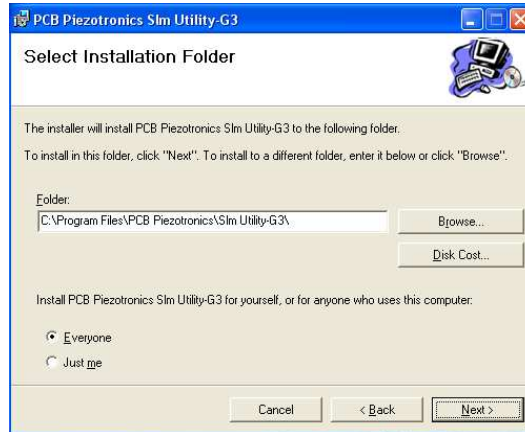
## Firmware Version: V1.5 and later

Describes how to upload the latest firmware and/or new options to Model 831 and SoundTrack LXT®



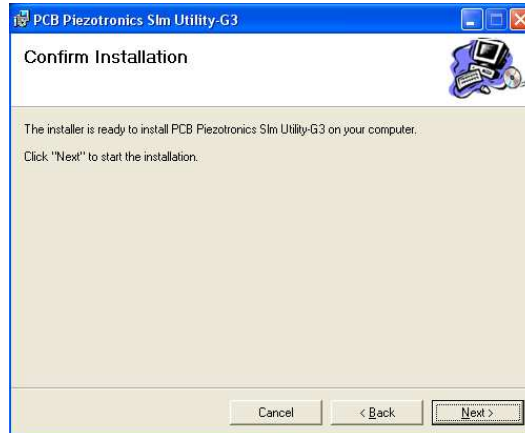
Default installation directory path is -- C:\Program Files\PCB Piezotronics\Sim Utility-G3\Firmware

- Select Next



IF THE PATH TO THE FILE IS LONGER THAN 128 CHARACTERS THE MS WINDOWS OPERATING SYSTEM WILL GENERATE AN ERROR. YOU WILL HAVE TO MOVE THE SOFTWARE TO A PLACE WITH A SHORTER PATH NAME.

- Select Next



716-926-8243  
www.larsondavis.com



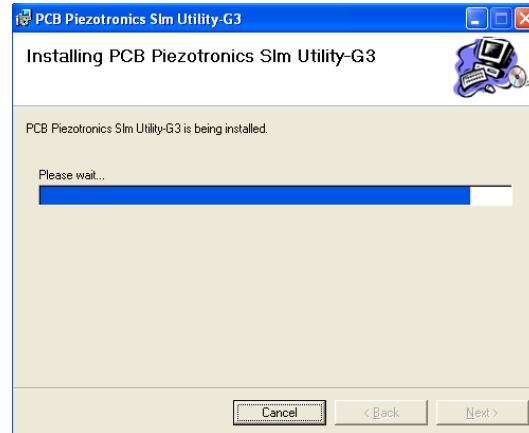
## FAQ - Installing new firmware and/or options on Model 831 and SoundTrack LXT®

### Firmware Version: V1.5 and later

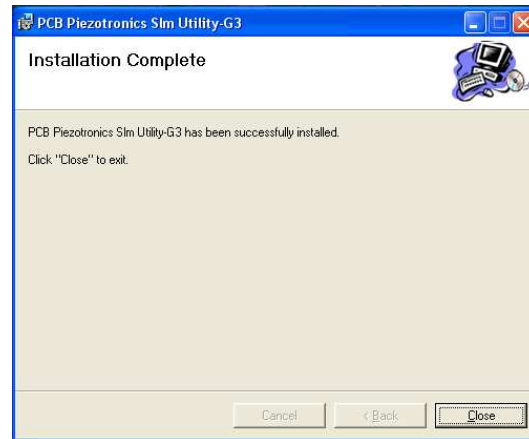
Describes how to upload the latest firmware and/or new options to Model 831 and SoundTrack LXT®



- Wait for the program to install



- Select Close



- Upon completion of the install, you will see the SLM Utility-G3 shortcut which has been created on your desktop to initiate the software program



SLM Utility-G3



716-926-8243  
www.larsondavis.com



## FAQ - Installing new firmware and/or options on Model 831 and SoundTrack LXT®

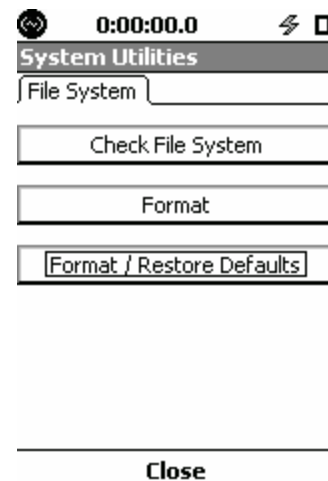
### Firmware Version: V1.5 and later

Describes how to upload the latest firmware and/or new options to Model 831 and SoundTrack LXT®



#### Installing firmware in Model 831 and SoundTrack LXT® using SLM Utility-G3

- It is of critical importance to save any data and empty the 831 or LXT before you upgrade it.
- After your data is saved to your PC, from the meter, go to Tools, System Utilities, and run the Format/Restore Defaults.



- Note that a crash during this upgrade procedure can be fatal to the unit. As a consequence: please leave it connected to the PC at all times and don't remove the cable until it is completely finished.
- Run the SLM Utility-G3 software
- With the LXT or 831 connected to your PC or laptop via the USB cable, click the 'Connect' button in SLM Utility-G3



716-926-8243  
www.larsondavis.com

 **LARSON DAVIS**  
A PCB PIEZOTRONICS DIV.

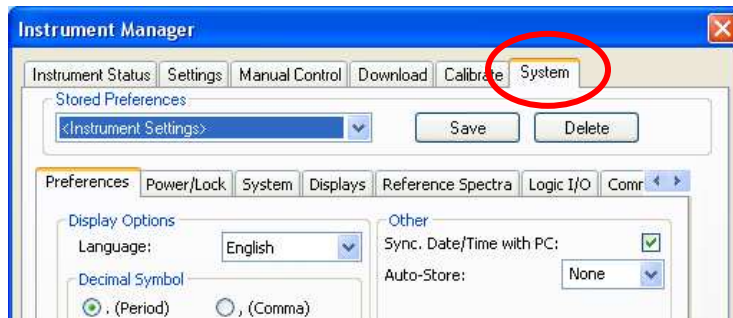
## FAQ - Installing new firmware and/or options on Model 831 and SoundTrack LXT®

### Firmware Version: V1.5 and later

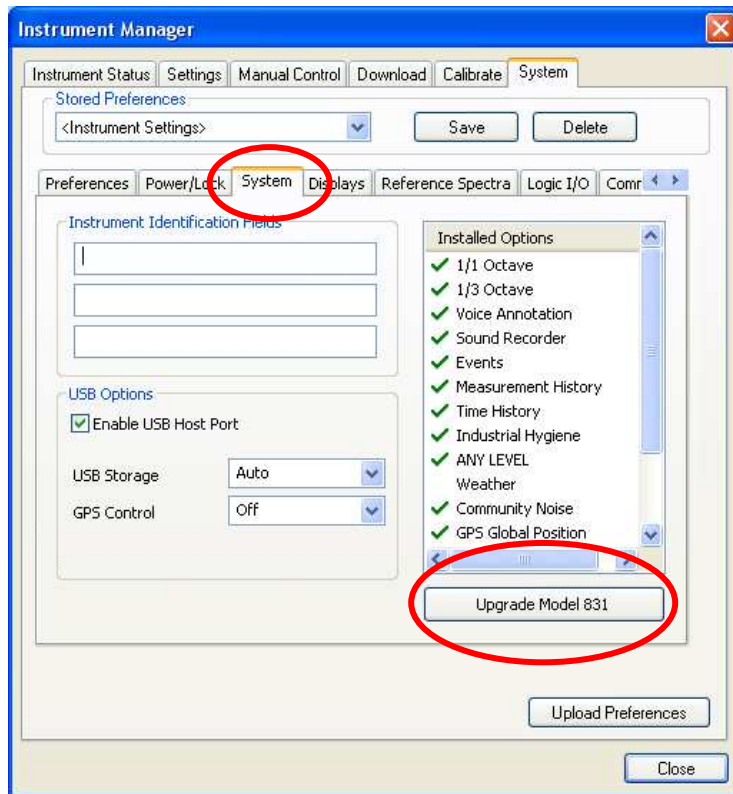
Describes how to upload the latest firmware and/or new options to Model 831 and SoundTrack LXT®



- When the 'Instrument Manager' pops up, click on the SYSTEM tab as shown below



- Inside the SYSTEM tab, select "System" then "UPGRADE MODEL XXX"



716-926-8243  
www.larsondavis.com



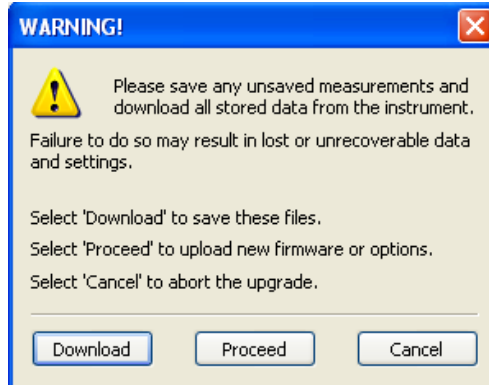
# FAQ - Installing new firmware and/or options on Model 831 and SoundTrack LXT®

## Firmware Version: V1.5 and later

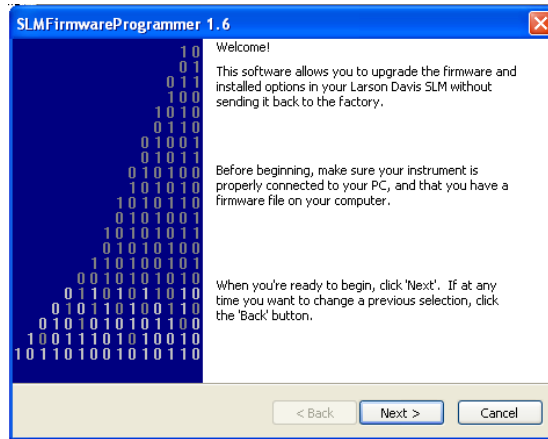
Describes how to upload the latest firmware and/or new options to Model 831 and SoundTrack LXT®



- You will be instructed to save any unsaved measurements prior to upgrading the firmware. This is important since upgrade will erase any UNSAVED data



- Click Next



# FAQ - Installing new firmware and/or options on Model 831 and SoundTrack LXT®

## Firmware Version: V1.5 and later

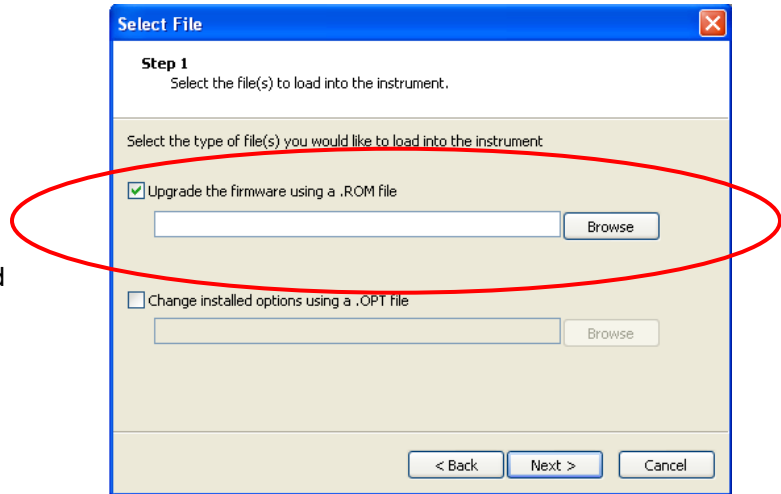
Describes how to upload the latest firmware and/or new options to Model 831 and SoundTrack LXT®



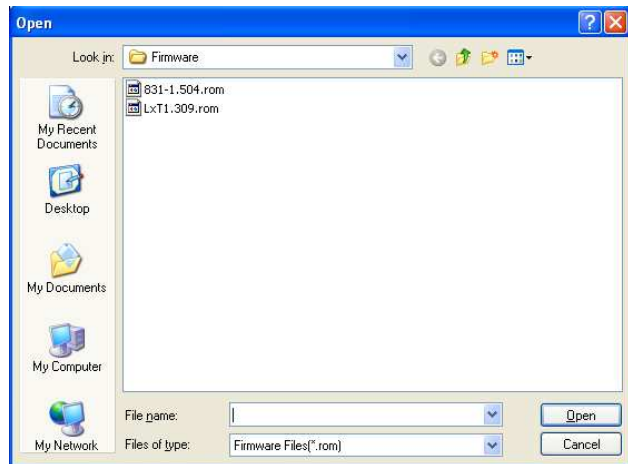
- Make sure 'Upgrade the firmware using a .ROM file' is selected and follow instructions as prompted to upgrade the model 831 firmware. If you chose the default G3 install directory, the standard location for ROM updates is: C:\Program Files\PCB Piezotronics\Slm Utility-G3\Firmware.

*However, **be aware that if you have previously updated your sound level meter, the text box may contain a different file path or point to an old ROM target file.** To point to the correct ROM file, simply click browse, navigate to the firmware directory created when you executed the installation file for G3 (see path above) and select the correct file.*

- Browse to file location listed above



- Select rom file corresponding to your model meter



716-926-8243  
www.larsondavis.com



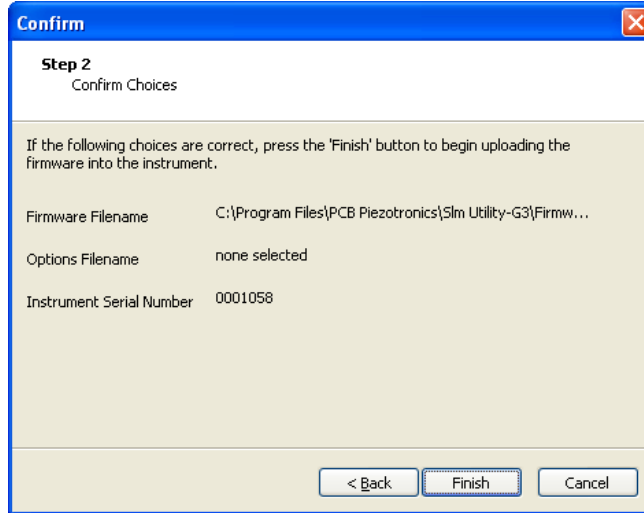
# FAQ - Installing new firmware and/or options on Model 831 and SoundTrack LXT®

## Firmware Version: V1.5 and later

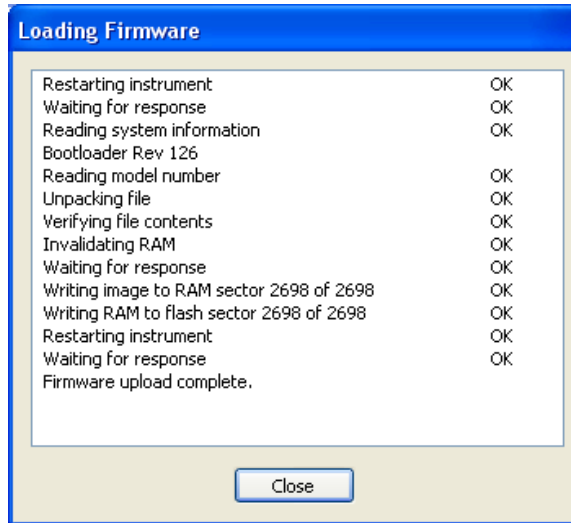
Describes how to upload the latest firmware and/or new options to Model 831 and SoundTrack LXT®



- Click Finish to proceed with firmware update



- Wait until Firmware upload complete appears



- Close the window



716-926-8243  
www.larsondavis.com



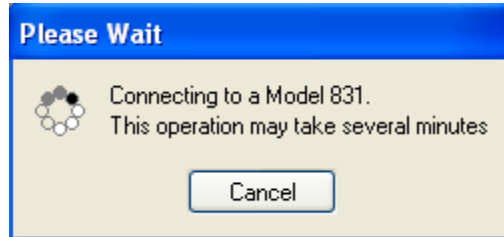
## FAQ - Installing new firmware and/or options on Model 831 and SoundTrack LXT®

### Firmware Version: V1.5 and later

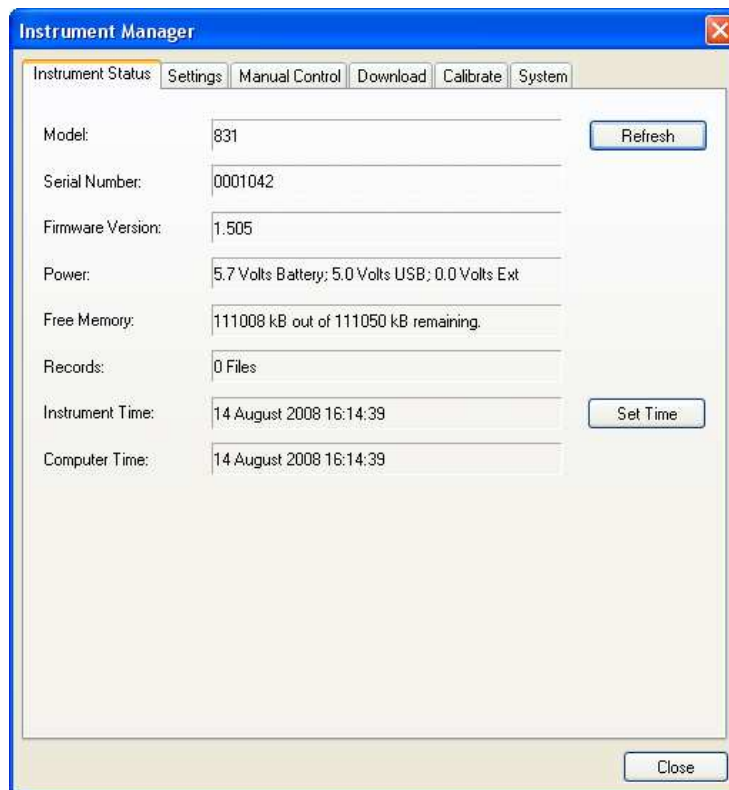
Describes how to upload the latest firmware and/or new options to Model 831 and SoundTrack LXT®



- The Meter will connect again



- Close the instrument Manager



- Click on the disconnect icon



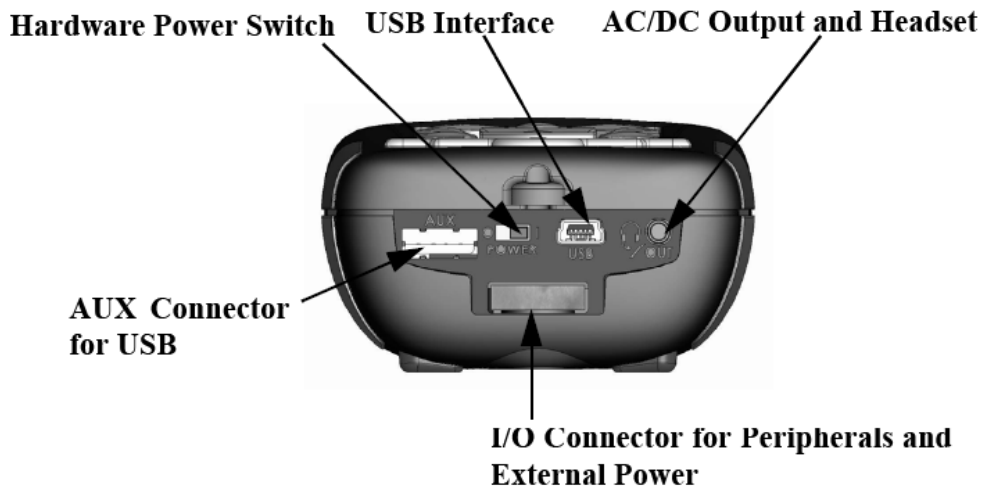
## FAQ - Installing new firmware and/or options on Model 831 and SoundTrack LXT®

### **Firmware Version: V1.5 and later**

Describes how to upload the latest firmware and/or new options to Model 831 and SoundTrack LXT®



- After the upgrade is finished you need to power the LxT or 831 down then turn the Hardware Power Switch on the bottom of the meter, off then on, and reboot the instrument to ensure that the new setup is activated completely (831 shown).



# FAQ - Installing new firmware and/or options on Model 831 and SoundTrack LXT®

## Firmware Version: V1.5 and later

Describes how to upload the latest firmware and/or new options to Model 831 and SoundTrack LXT®



### Installing options in Model 831 and SoundTrack LXT® using SLM Utility-G3

- Follow same instructions as above, but select “Change Installed Options using a .OPT File” checkbox and browse to the location where you have stored the .OPT file and follow the instructions as prompted to upgrade the options files.

NOTE – options files are tied to the S/N of your instrument and are typically emailed to you after order placement.

*However, **be aware that if you have previously updated your sound level meter, the text box may contain a different file path or point to an old OPT target file.** To point to the correct OPT file, simply click browse, navigate to the firmware directory created when you executed the installation file for G3 (see path above) and select the correct file.*

